





YAS&RG
DEVELOPMENT CO. LLC

INDEX

Introduction	3
Our Companies	4
Organization Chart	5
Vision and Mission	6
Our Capabilities	7
The Directors	9
Completed Projects <ul style="list-style-type: none">• Residential Projects• Commercial Projects	12
Our Turnkey Solutions	17
Contact Us	18

ABOUT US & WHAT WE DO

YAS&RG Project Development Consultancy is based in Dubai with a keen focus on Construction, Commercial and Warehouse Storage projects spread across Dubai (DIP – Dubai Investment Park, Jebel Ali Industrial Area, Jumeirah Village Circle, Dubai Industrial City and more.

We strive to play a vital role in the region's future progress by discovering new untapped markets, expanding our vision, and staying up to date with market trends. We do not compromise on the quality of work and on-time delivery with our premium after-sales and customer service.

We firmly believe that it is our clients who bring YAS&RG to life. As a result, you can be confident that YAS&RG will be your ideal partner if you plan to invest in land with the potential for development, require assistance in putting your land up for growth, or would like to sell it for the highest possible value.

MANAGEMENT

We want to take this opportunity to commit that we will make every attempt to go above and beyond your expectations, satisfaction, needs, and requirements of our customers and clients. We are committed to offering a one-stop solution for all of the commercial real estate business activities, as well as other extended real estate services, to all of our valued clients.

RG GROUP

RIVERIA GLOBAL GROUP OF COMPANIES

WWW.RGGROUP.AE

Riveria Global Group of Companies

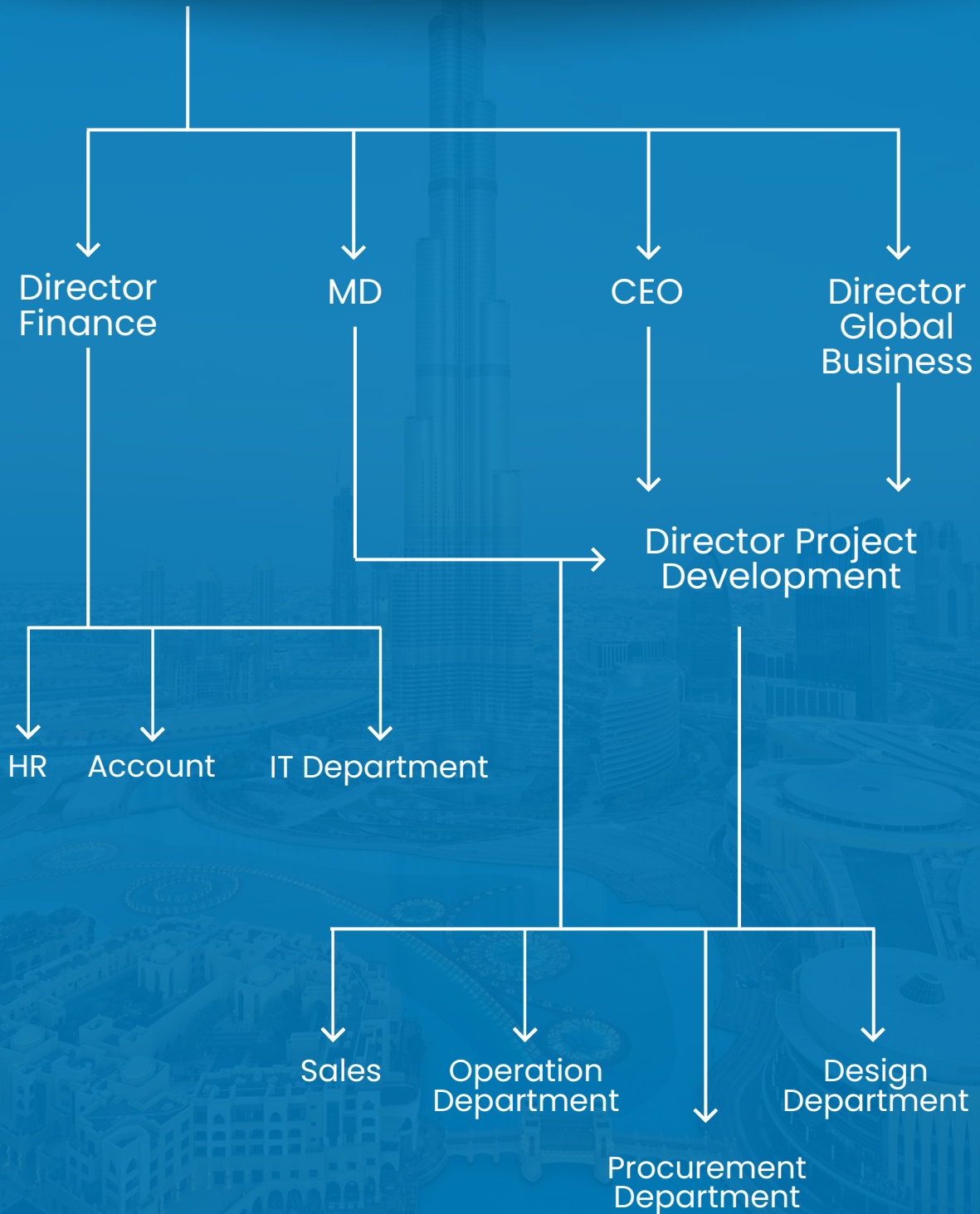
With more than a decade experience in Dubai real estate specializing in Buying, Selling, Leasing, Investment and much more, Riviera Global Group of Companies provides you a complete 360 degree solution whereas RGEstate can help you with buying/ selling of land or buildings and Yas&RG can help you with the development of the estate and RGMedia360 will market the property at right platforms that gets you the potential buyers which will give you the maximum profit.

As a group of companies providing turnkey solutions, we focus on the philosophy of ongoing improvement with our exceptional services that goes beyond your expectations with time management and cost effective solutions.

OUR ESTABLISHMENTS



YAS&RG Project Development Company LLC



VISION & MISSION

VISION

Experience innovation from our eyes.

Our Focus:

- To safeguard and enhance its engineering-focused core business.
- The acquisition of novel skills and pursuits
- To adapt to the clients' and markets' shifting needs.

MISSION

We aim to create the finest products and financial capabilities that cater for long-term growth.

OUR VALUES

FOCUS

Focus on the philosophy of ongoing improvement

COMMITMENT

Commitment to the technical and managerial development of our staff to remain on top.

OBSERVE

Observe high standards of health and safety and make sure that it is the primary objective of all our activities.

ENCOURAGE

Encourage a culture founded on a sense of pride and belonging and empower our employees to take initiatives and assume responsibilities thus creating an environment that promotes Reliability, Independence, and Drive

OUR CAPABILITIES

We provide exceptional services that embrace prominent commercial sectors and respective clients so that our clients can rest assured that we are well administering their projects. We offer complete turnkey solutions to cost-effectively meet the most demanding requirements and have an in-house architectural team that can handle all types of design needs.

YAS&RG Specializes In:

- ▶ Estimation and planning
- ▶ MEP, structural, and architectural design
- ▶ MEP, structural, and architectural design
- ▶ Fit-out and Maintenance Projects
- ▶ Crisis management and project troubleshooting
- ▶ Quality control and assurance
- ▶ Safety and health
- ▶ Occupational safety and compliance

We Stick to The Deadlines!

OUR SERVICES

With exclusive in-house technical support, we are confident that we can help our clients with any issues that may occur and deliver fully integrated solutions. for-

Residential Sector

- ▶ Villas
- ▶ Residential Buildings
- ▶ Staff & Labour Accommodations

Industrial Sector

- ▶ Warehouses
- ▶ Cold Stores
- ▶ Factories
- ▶ Logistics Facilities
- ▶ Hangers

Commercial Sector

- ▶ Showrooms
- ▶ Shopping Malls
- ▶ Office Buildings

Hospitality Sector

- ▶ Schools
- ▶ Hotels
- ▶ Hospitals

Prime Minister and Ruler of Dubai



UAE Vice President, Prime Minister and Ruler of Dubai His Highness Sheikh Mohammed bin Rashid Al Maktoum

The man behind enduring success, unrivaled leadership style and irrevocable strength. Sheikh Mohammed has played a significant role in Dubai's development by developing new economic sectors and capitalizing on the emirate's strength which is continuing to grow enormously.

His Highness Sheikh Mohammed bin Rashid Al Maktoum says that "maintaining the pinnacle of success is harder than trying to attain it"

Sheikh Mohammed believes that "the best thing a man can do is carry out his tasks to the best of his ability while serving his people and his country. In his opinion, rank is unimportant in comparison to one's deeds and achievements"

**"We in the U.A.E. have no such word as 'impossible';
it does not exist in our lexicon. Such a word is used by the lazy
and the weak, who fear challenges and progress"**

- Sheikh Mohammed bin Rashid Al Maktoum

BOARD OF DIRECTORS



Dinesh Ramchand
Managing Director

Dinesh Ramchand comes with an extensive background in International Business, giving him a keen sense for identifying key investment opportunities, which makes him a skilled Managing Director and a personality that radiates positive energy and passion towards the work that he enjoys the most. He follows strategic measures and careful attention to detail when he serves his investors. Having experience for more than three decades in business has taught him that the best results from service are attained with proper team guidance and understanding of the needs of the investors accurately. Dinesh Ramchand's thorough knowledge enabled Rivera Global to deliver its mission of offering the best experience to every investor negotiator and successful Director.



BOARD OF DIRECTORS



Girish Gurnani

Director - GLOBAL BUSINESS



Veena Chauhan

Director Finance

Girish Gurnani Simplifying business processes is the key to optimum use of in-house resources' Girish has an innovative leadership style. It gives utmost importance to excellence and integrity in all facets of the business. Exploring new always goes beyond the expectations of the concerned. Girish Gurnani has established himself as an excellent Business Development Manager passing on his years of experience, skills and professionalism to one and all.

Veena Chauhan has a keen eye for finance management, and her keen sense of market analysis keeps her in good stead for extensive planning; under her financial planning, the company has grown to be a group of companies.



Ashish Chowdhary

Director - Project Development



With more than 15 years of experience, Ashish has the urge to learn about the latest developments in IT and apply them to my Architectural domain, change the current practice, and establish myself as a successful person. Good communication skills help me in developing a fast relationship with others, and that drives me to work more enthusiastically with them in achieving the target. I want to establish myself in the future in the Management or Design fields

Experties

- Highly proficient in analyzing, designing and adopting innovative techniques to upgrade the work standard.
- Review shop drawings, specifications, cost estimates and construction material recommendations. Proven mentorship and staff development skills.
- He advanced problem-solving capabilities. Excellent verbal and written communication skills. Target centric and devoted to accomplishing the indispensable projects within the time frame.
- Capable of creating a favorable working environment.
- Expert in exploring innovative techniques to upgrade the standard of work.
- Ensure that all works are carried out to specific standards and building codes. Guidelines and regulations.

COMPLETED PROJECTS - COMMERCIAL



Project: G+4 Accommodation Buildings
Build-up Area: 2,75,000.00 SQFT



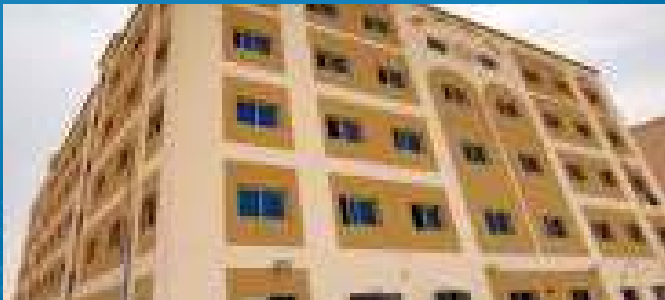
Project: B+G+4 Roof Residential Building
Build-up Area: 244,352 SQFT



Project: G+1 Showroom
Build-up Area: 53795.16 SQFT



Project: B+G+1 Showroom
Build-up Area: 44,251.30 SQFT



Project: Labor Camp
Build-up Area: 71,001,55 SQFT



Project:
G+M Warehouse & Offices



Project: G+M Warehouse & Office



Project: Gul Café Project



Project: G+M Warehouse & Offices



Project: G+M Warehouse & Office



Project: G+M Warehouse & Office



Project: G+M Warehouse & Office



Project: G+M Warehouse & Office



Project: G+M Warehouse & Offices



Project: G+M Warehouse & Offices



Project: G+M Warehouse & Office



COMPLETED PROJECTS – RESIDENTIAL

Introducing our exquisite residential project portfolio, where luxury meets comfort. Immerse yourself in a collection of meticulously crafted homes designed for modern living. From stylish apartments to spacious villas, each property is a testament to elegance and functionality. Explore our portfolio and discover the perfect home tailored to your lifestyle.

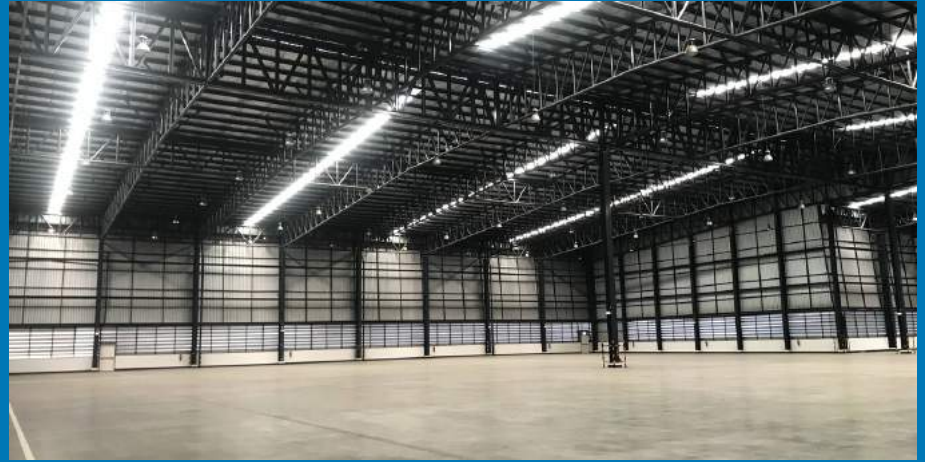
We strive to play a vital role in the region's future progress by discovering new untapped markets, expanding our vision, and staying up to date with market trends. We do not compromise on the quality of work and on-time delivery with our premium after-sales and customer service.

We firmly believe that it is our clients who bring YAS&RG to life. As a result, you can be confident that YAS & RG will be your ideal partner if you plan to invest in land with the potential for development, require assistance in putting your land up for growth, or would like to sell it for the highest possible value.





OUR TURNKEY SOLUTIONS



With the strength of over 1000 labourers, In-house design and construction, we are confident that we can assist our clients with any challenge that arises and provide with complete turnkey solutions for:

Industrial Sector

- ▶ Warehouses & Hangers
- ▶ Cold Stores & Factories
- ▶ Logistics Facilities

Residential Sector

- ▶ Villas
- ▶ Residential Buildings
- ▶ Staff & Labor Accommodation

Commercial Sector

- ▶ Showrooms
- ▶ Shopping Malls
- ▶ Office Buildings

Hospitality Sector

- ▶ Schools
- ▶ Hotels
- ▶ Hospitals



YAS & RG

DEVELOPMENT CO. LLC



Corporate Office:

Suite# 1005, Aspect Tower,
Business Bay, Dubai, UAE.

P.O Box 232574

TELEPHONE +971 4 876 1513

For Sales enquiries, please contact
sales@rgestate.com

www.rgestate.com